

IN-SALON TREATMENT PROCESS
Adenovital Root Energising In-Salon Treatment
 Adenovital 激活发根生发服务

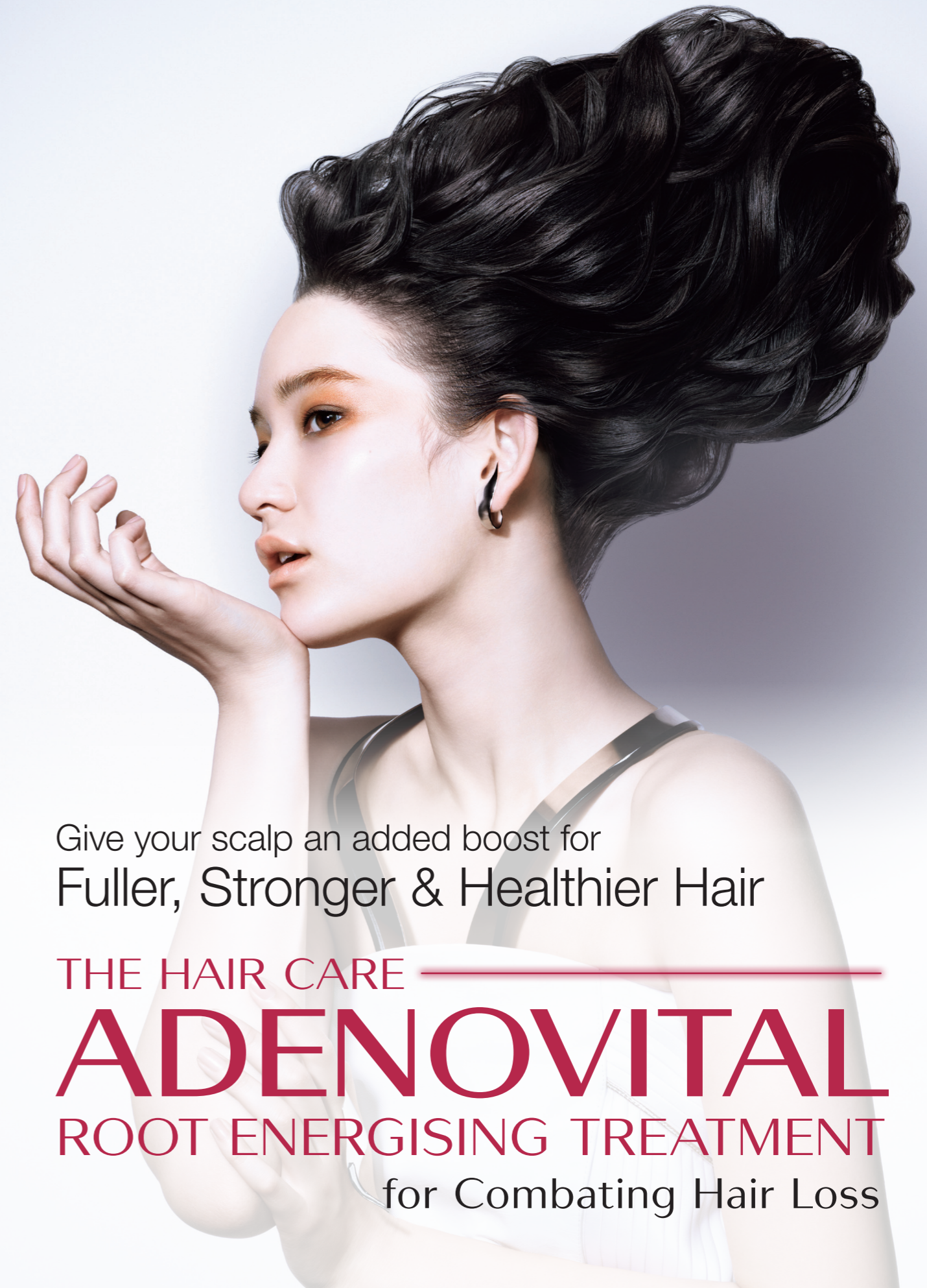


THE HAIR CARE - ADENOVITAL HOME CARE RANGE 居家护理



Scalp Care
100 Expert
 Years

SHISEIDO
 PROFESSIONAL



Give your scalp an added boost for
Fuller, Stronger & Healthier Hair

THE HAIR CARE
ADENOVITAL
 ROOT ENERGISING TREATMENT
 for Combating Hair Loss

GET TO THE ROOT OF THINNING HAIR

解决脱发从滋养发根开始

Shiseido Professional's Adenovital Treatment supplies your hair roots with naturally occurring ingredients to give you fuller, stronger and healthier hair.

资生堂专业美发 Adenovital 抗脱发服务采用最好的天然精华滋养更丰盈, 更强嫩, 更健全的秀发。

FULLER 丰盈
Adenosine
腺苷 - 人体生发的活性成分
A biological active ingredient present in the human body which promotes hair growth.

Panax Ginseng Extract 人参精华
Shortens resting phase and stimulate root sheath cells to increase the number of hair strands.

STRONGER 强嫩
Ononis Extract 芒柄花精华
Strengthens hair cuticle.

Perilla Extract 紫苏精华
Strengthens hair cortex (cuticle surface of hair).

HEALTHIER 健全
Hop Extract and LingZhi Extract
啤酒花、灵芝精华
Promote melanin production and changes grey hair to black.

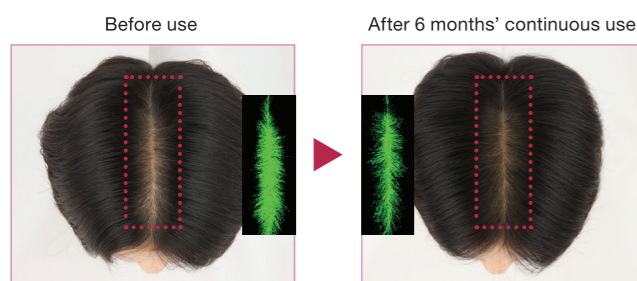
Jasminum Sambac Element 茉莉花精华
Promotes blood circulation and delivers nutrients to hair.

SHISEIDO PROFESSIONAL'S ADENOVITAL TREATMENT RESULTS

资生堂专业美发 Adenovital 抗脱发效果

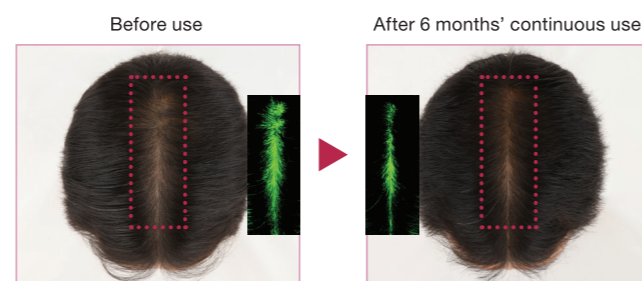
Reduction of thinning hair area by 48%

(Female, 50s)



Reduction of thinning hair area by 36%

(Male, 40s)



Grey hair area reduced from 48% to 25%

(Female, 70s)



Grey hair area reduced from 76% to 55%

(Male, 50s)



* After 6 months continuous use (in-salon treatment and home care maintenance)
六个月连续使用 (抗脱发沙龙服务及居家护理)

WITH DEEPER ADENOSINE PENETRATION

简单生发三部曲

Get fuller, stronger and healthier hair with Shiseido Professional's new Root Energising Treatment.

Adenosine penetration is increased by 300% with this simple 3 step service.

资生堂专业美发独特 Root Energising 生发服务能促进腺苷吸收率高达300%,
以简单三步骤促进生发生长效应, 让秀发更丰盈, 更强韧, 更健全。

1

Create a foundation for Adenosine penetration with **Warming Primer**

以 **Warming Primer** 软化头皮, 让头皮以最佳状态吸收腺苷生发活性成分



- A mousse-textured formula that blends with sebum and oil to produce a warming effect that softens and hydrates the scalp.
- After rinsing with water, the scalp becomes hydrophilic, creating an optimal scalp condition for the penetration of Adenosine.

2

Infuse scalp with Adenosine using **Optimising Gel**

Optimising Gel 把大量腺苷生发活性成分注入于发根, 促进秀发生长



- A highly moisturising treatment gel with high concentration of Adenosine that does not dry easily and is effortless to spread.
- Jasmin Sambac extracts promote blood circulation and deliver nutrients to hair.

3

Lock in Adenosine within scalp with **Seal In Spray**

Seal In Spray 收缩头皮毛孔, 把腺苷生发活性成分封闭于头皮内, 防止腺苷的流失



- A spray that tightens the scalp and pores to trap Adenosine deep inside hair roots
- Witch Hazel Extract tightens scalp pores
- Menthol extracts cool down the scalp and soothe it